

## Industrial Steel Ring System Scaffolding with Multidirectional Ringlock Components and 3.25mm Tube Thickness

Our Product Introduction

for more products please visit us on [bythaiscaffold.com](http://bythaiscaffold.com)

### Basic Information

- Place of Origin: Tianjin China
- Brand Name: Bythai
- Certification: SGS ISO
- Model Number: BT203
- Minimum Order Quantity: 1000
- Price: 10.8-85.5
- Packaging Details: In bundles
- Delivery Time: 10-15
- Payment Terms: TT/TC

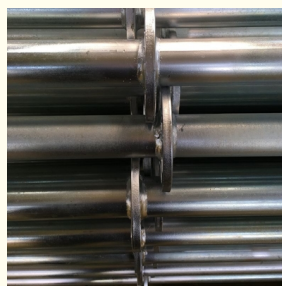
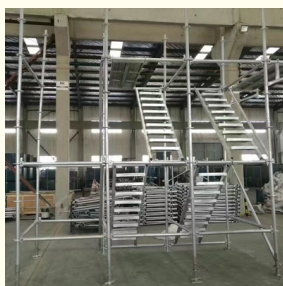


### Product Specification

- Application: Construction/Building/Industrial/Commercial
- Warranty: 2 Years
- Material: Q235 Steel
- Product Name: Ringlock System
- Shipping Origin: China
- Surface Treatment: Hot Dip Galvanized
- Design Style: Industrial
- Usage: Construction
- Ledger Size: 48.3x3.25mm
- Horizontal Adjustment:  $\leq \pm 3^\circ$
- Ring Thickness: 8mm
- Vertical Load Capacity:  $\geq 45\text{KN}$
- Rosette: Q235 Steel
- Ledger Spacing: 0.5m
- Self-Weight:  $\leq 20\text{kg}$



### More Images



## Product Description

### Product Description

Our Cheap Scaffold Materials Steel Multidirectional Ringlock Components Ring System provides cost-effective solutions for versatile scaffolding setups. Constructed from durable steel, the ringlock components feature a multidirectional locking system that allows for flexibility and quick assembly. Perfect for contractors seeking an affordable, high-quality scaffolding system with reliable performance in both industrial and commercial projects.

### Specification:

#### Ringlock Vertical Standard

Specification	Thickness(mm)	Length(mm)	Surface	Weight(kgs)
M48	3.2	500	HDG	2.56
M48	3.2	1000	HDG	4.99
M48	3.2	1500	HDG	7.45
M48	3.2	2000	HDG	9.95
M48	3.2	2500	HDG	12.43
M48	3.2	3000	HDG	14.87

### Details Pictures:







**Warehouse & Loading**







## Certificates:





bythaiscaffolding

25

#### FAQ:

Q: What types of scaffolding systems do you offer?

A: We offer a variety of scaffolding systems, including ring lock, frame, prop, tube & coupler systems, steel and aluminum planks, and various scaffolding accessories.

Q: How does your quality control process ensure the safety and reliability of your scaffolding products?

A: Our strict quality control process includes thorough inspections, material testing, and adherence to international safety standards to ensure our scaffolding products are safe and reliable.

Q: Can you provide customized scaffolding solutions to meet specific project requirements?

A: Yes, we offer customized scaffolding solutions tailored to meet the unique needs of your project, ensuring optimal performance and safety.

Q: What is the typical lead time for orders, and how do you handle urgent requests?

A: Our standard lead time varies depending on the order size and complexity, but we prioritize urgent requests to ensure timely delivery without compromising quality.

Q: Do you offer support and guidance for scaffolding assembly and installation?

A: Yes, we provide comprehensive support, including detailed assembly instructions and technical assistance to ensure proper installation and safe use of our scaffolding systems.

Q: What are the key advantages of using your aluminum ringlock system?

A: Our aluminum ringlock system offers several advantages, including lightweight design, easy assembly, high load capacity, durability, and corrosion resistance, making it ideal for various construction projects.

Q: How do your prices compare to other scaffolding suppliers?

A: We offer competitive factory prices while maintaining high-quality standards, providing cost-effective solutions that deliver excellent value for your investment.

Q: What certifications and standards do your scaffolding products meet?

A: Our scaffolding products meet international certifications and standards, including OSHA, EN, and ISO, ensuring they comply with the highest safety and quality requirements.

Q: Can you provide references or case studies from past projects?

A: Yes, we can provide references and case studies showcasing our successful projects and satisfied customers to demonstrate our expertise and reliability.

Q: What is the process for placing an order and what payment options do you accept?

A: Placing an order is simple: contact our sales team with your requirements, receive a detailed quote, and finalize the order. We accept various payment options, including TT, letters of credit, and other secure methods.



Bythai Scaffolding Co.,Ltd



17300780862



info@bythaiscaffolding.com



bythaiscaffold.com

No. 605,Industrail Exchange Center ,Huanghua Town Changsha Hunan China